



Notifications for Placing a Permanent Pacemaker

Created in 2005.05

Revised in 2023.12

I. Before the surgery

1. Doctor will explain the purpose, process and complication of placing a permanent pacemaker.
2. You need to sign an informed-consent form before the surgery in granting permission to place a permanent pacemaker.
3. Please confirm your doctor if you need fasting before the procedure.

II. After the surgery:

1. You can start eating after the surgery.
2. You can move your hands horizontally, but do not lift your left shoulder after surgery.
3. The wound is covered by Waterproof gel dressing no need for dressing.

III. Care of daily life

1. Keep close watch of your wound daily: should there be any inflamed symptoms such as red, pain, swelling or secretions, you should inform your doctor. Keep your wound dry and avoid any chance of wetting it in 1 to 2 weeks.
2. Your heart rate is set to /minute. Please measure the pulse every day. Method: place your index and middle fingers of your opposite hand on your wrist, approximately 1 inch below the base of your hand. Count your heart beat for a minute. If the heart rate is less than 1~2 beat/minute, it may be caused by low battery or poor wire connection. Please return for visit and inform the doctor immediately.
3. The **metal detector** may alert in airports or other places due to the metal of your pacemaker. Make sure to tell the security about your pacemaker. The metal detector will not affect your pacemaker.
4. Please keep a distance of over 2 meters away from high voltage devices due to its' disturbance to the pacemaker. Using normal home electrical devices is allowed
5. Please avoid moving your hands and shoulders violently or lifting objects over 2.5-4.5 kg within 4 weeks. It might cause electrode failure and cause danger.
6. Daily activities could be restored after 4 weeks, including sexual activities.
7. Depending on the specs of the pacemaker, one should ensure whether it can go through MRI or not.

IV. Following:

1. You will receive phone calls from the medical team, please return regularly for check-ups to ensure the safety of the pacemaker.
2. You will receive a pacemaker ID card after you return home. Please bring your pacemaker ID card with you all the time. Remember to inform the medical staffs that you have a pacemaker before any treatment in the future.

V. The position of pacemaker.

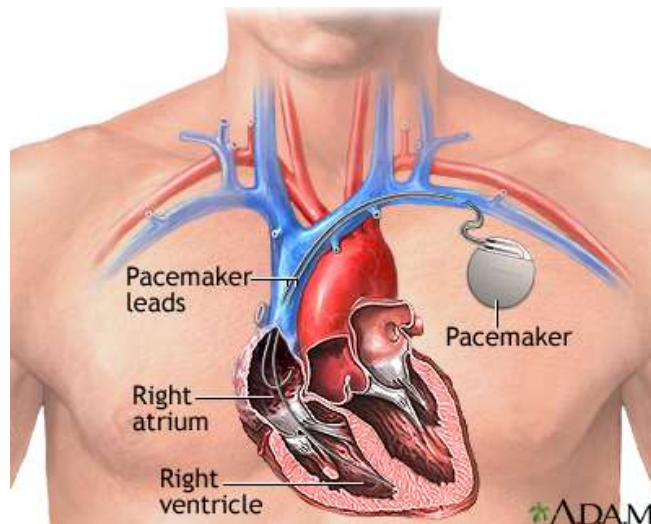


Image from www.nlm.nih.gov/.../ency/imagepages/19566.htm

If you have any questions or suggestions, please contact us. We are very willing to help. Our contact telephone number: Taipei main branch Hospital: (02) 25713760 ; Hsinchu branch: (03)5745098 ; Taitung branch: (089) 310150 ext:311. Time of consultant: 9:00 am~12:00 noon, 2:00 pm~5:00 pm Monday ~ Friday.

May God bless you